

# DDS



NIAGA BERSAMA KELUARGA

# FIRE PROTECTION SYSTEM

## PRODUCT CATALOG



**PT. NIAGA BERSAMA KELUARGA**

[www.niagabersamakeluarga.com](http://www.niagabersamakeluarga.com)

[niagabersamakeluarga@gmail.com](mailto:niagabersamakeluarga@gmail.com)

**CONTACT**

+62 857 - 1188 - 3109

+62 812 - 9586 - 5655

# FIRE ALARM CONTROL PANEL

## Central Control Module

**FIRE ALARM DEVICE**

### Product Image



### Product Description

Fire Alarm Control Panel (FACP) is the primary control center of a fire protection system responsible for receiving, processing, and responding to all signals from detection devices within a building. The system is equipped with a microprocessor-based Central Control Module (CCM) that manages all system operations in an integrated and real-time manner.

The CCM functions as the main processing unit that executes system instructions through firmware and internal memory. This module manages communication with addressable devices, monitors system conditions, and activates notification and control equipment according to predefined programming logic.

The FACP provides an intuitive operator interface consisting of an LCD display, system status LED indicators, an audible warning buzzer, control buttons, and a navigation keypad. System information such as power status, alarms, faults, and supervisory conditions is displayed clearly to facilitate monitoring and response actions. Through an addressable communication loop, the system can connect to various field devices such as photoelectric smoke detectors, heat detectors, and control modules, each with a unique device address. This enables precise incident location identification and faster response handling.

### Key Feature

- Microprocessor-Based System Control
- Integrated Monitoring and Control
- High-Precision Addressable Communication
- Informative Operator Interface
- Programmable Control Outputs
- External System Integration Capability
- Continuous Power Supply Supervision
- High Operational Stability

### System Control

<b>System Type</b>	Addressable Fire Alarm Control Panel
<b>Control Module</b>	Central Control Module (CCM) berbasis mikroprosesor
<b>Firmware</b>	DDS Fire Alarm System V1.5 Protection
<b>System Memory</b>	Internal system memory

### Device Communication

<b>Device Capacity</b>	315 Addressable Devices per Loop
<b>Device Type</b>	- Photoelectric Smoke Detector - Heat Detector - Addressable Control Module
<b>Communication Protocol</b>	SLC - TTL - Serial Communication
<b>Loop Voltage</b>	24 VDC
<b>Wiring Configuration</b>	NFPA Style 4, 6, dan 7 (SLC Devices)

# FIRE ALARM CONTROL PANEL

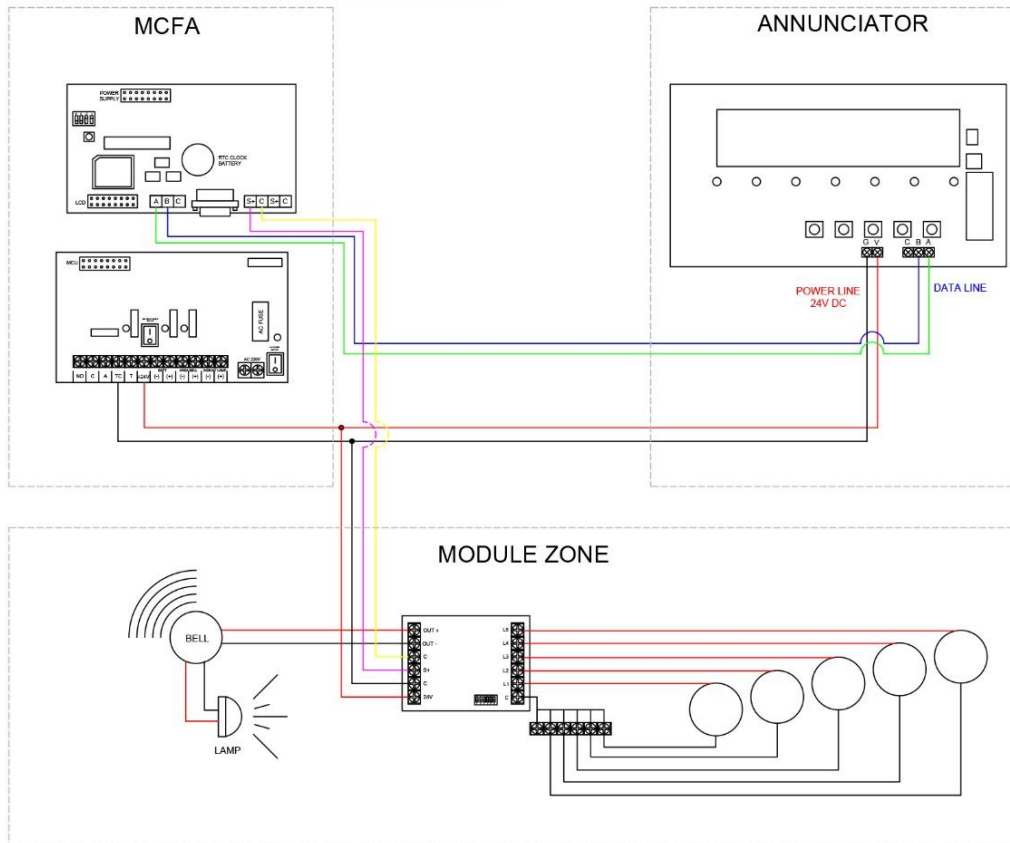
## Central Control Module

**FIRE ALARM DEVICE**

Operator Interface	
Display Screen	160-Character LCD
Status Indicators	7 System LEDs - AC Power - DC Power - Pre-Alarm/Alarm - Trouble - Supervisory - Silenced - Isolated
Local Warning	Internal Buzzer
Operator Controls	- 4 System Control Buttons - Numeric and Navigation Keypad
Wiring Configuration	NFPA Style 4, 6, dan 7 (with SLC devices)

Communication & Integration	
Serial Port	RS-232
System Integration	- Building Management System - Optional Printer - External Monitoring System
Remote Annunciator	- RS-485 Communication - NFPA Style 4 Wiring Configuration
Power Supply & Supervision	- Power Supply Module Interface - System Voltage Monitoring - AC Power Supervision - Backup Battery Supervision

## Schematic Drawing



### Note :

- Product specifications are subject to change without prior notice.
- Actual system performance depends on proper installation and use by qualified professionals.
- For further information or specific requirements not covered in this document, please contact the authorized distributor in your region.

# FIRE ALARM ANNUNCIATOR

## Central Control Module

**FIRE ALARM DEVICE**

Model: DDS - LCDRA

### Product Image



### Product Description

LCD Remote Annunciator is a remote interface device designed to display the real-time status information of the Fire Alarm Control Panel (FACP) from a different location within a building. This device enables operators to monitor the system without being physically present at the main control panel, thereby improving monitoring effectiveness and emergency response capability.

The annunciator is equipped with a 160-character LCD display that presents system event information, including alarm conditions, faults, supervisory signals, and other operational statuses. The display operates in conjunction with system status LED indicators to provide clear and easily understandable visual information for the operator.

The operator interface consists of an LCD screen, system status LED indicators, a local audible warning buzzer, and system control buttons. The internal buzzer provides an audible alert when system status changes occur to immediately draw the operator's attention. The control buttons allow execution of operational functions such as acknowledge, silence, drill, and system reset (with key authorization).

The LCD Remote Annunciator communicates with the FACP via an RS-485 communication line using a proprietary protocol designed to ensure stable and reliable data transmission. The system supports wiring configuration in accordance with NFPA Style 4 standards and allows connection of up to 30 annunciator units within a single system. The maximum communication distance reaches up to 1.2 km, enabling installation across large building areas.

### Product Specification

<b>Model Type</b>	DDS - LCDRA
<b>Device Type</b>	LCD Remote Annunciator
<b>System Type</b>	Addressable Fire Alarm System
<b>Display</b>	160 Character LCD (4 Lines x 40 Character)
<b>Status Indicators</b>	7 Status LEDs
<b>Indicator Functions</b>	AC Power, DC Power, Pre-Alarm/Alarm, Trouble, Supervisory, Silenced, Isolated
<b>Local Warning</b>	Internal Buzzer
<b>Operator Controls</b>	5 system Control Buttons
<b>Communication Protocol</b>	RS-485 Communication Bus
<b>Communication Speed</b>	19,200 bps
<b>Annunciator Capacity</b>	Maximum 30 Units per System
<b>Maximum Communication Distance</b>	1.2km
<b>Wiring Configuration</b>	NFPA Style 4
<b>Operating Voltage</b>	24 VDC
<b>Maximum Current</b>	100 mA
<b>Power Source</b>	Supplied from FACP
<b>Installation</b>	Surface Mounting or Flush Mounting
<b>Operational Functions</b>	Remote System Status Monitoring and Control

### Key Features

- Real-Time Remote System Monitoring
- Clear and Informative Data Display
- Integrated Operator Interface
- Access-Controlled Operational Functions
- S table RS-485 Communication
- Direct Integration with Fire Alarm Control Panel (FACP)
- Multi-Unit Support within a Single System
- Flexible Installation
- Reliable Operation with Centralized Power Supply

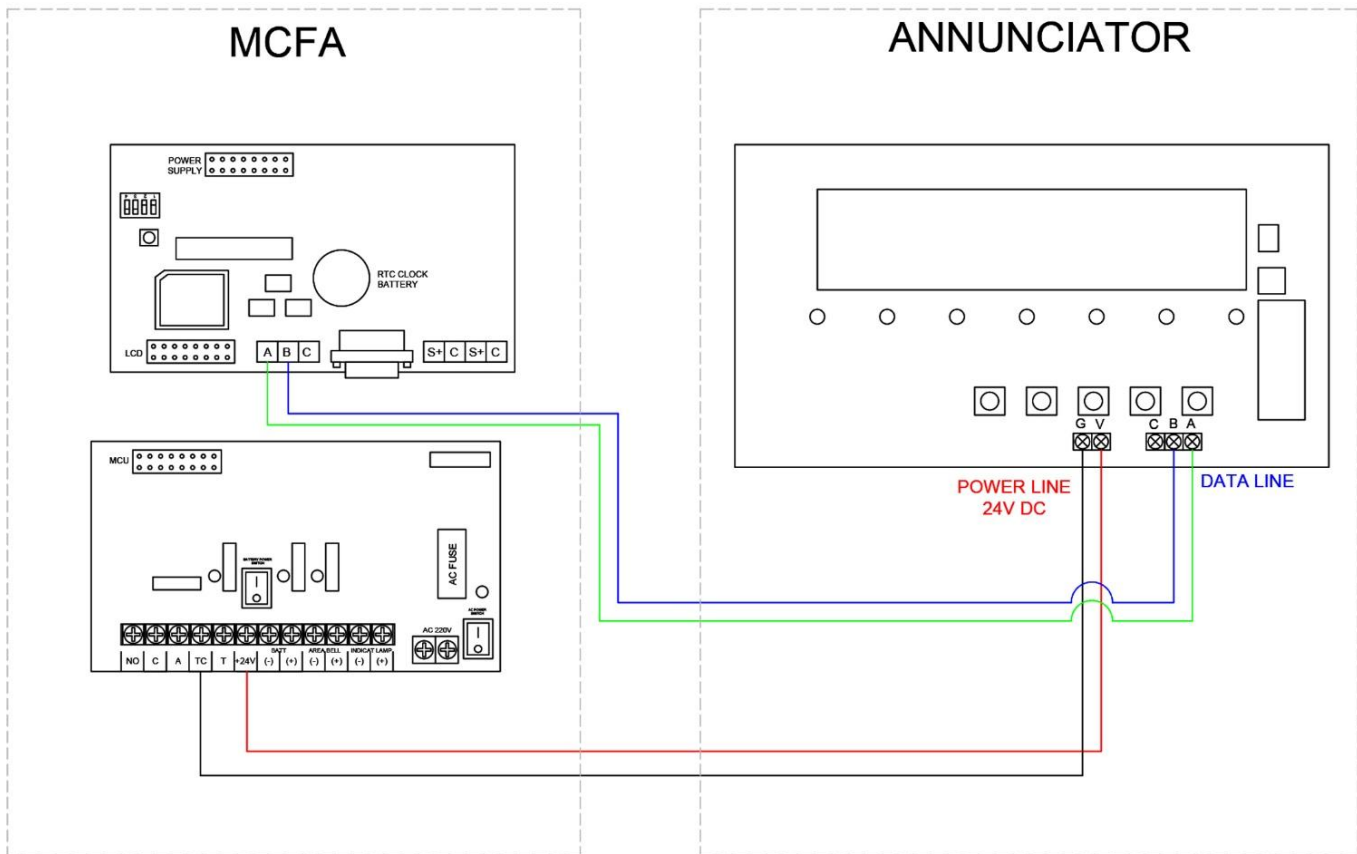
# FIRE ALARM ANNUNCIATOR

## Central Control Module

**FIRE ALARM DEVICE**

Model: DDS - LCDRA

### Schematic Drawing



### Note :

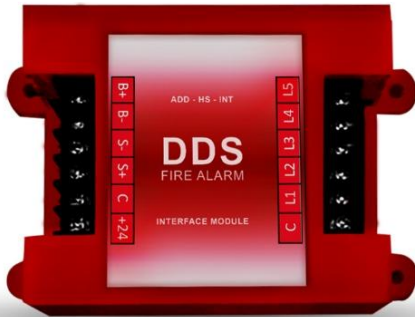
- The instructions in this document do not cover all details or variations of the equipment described, nor do they address every possible condition that may occur during installation, operation, or maintenance.
- Product specifications are subject to change without prior notice.
- Actual product performance depends on proper application, installation, and use by qualified professionals.
- For further information or specific requirements not covered in this document, please contact the authorized distributor in your region.

# FIRE ALARM INTERFACE MODULE

**FIRE ALARM DEVICE**

Model: DDS - IM

## Product Image



## Product Description

This integrated addressable module is designed to enable the Fire Alarm Control Panel (FACP) to communicate with external contact-based devices, such as conventional equipment or analog detectors. The module detects changes in signal status, including normal, alarm, supervisory, and trouble conditions, and transmits this information to the system for real-time monitoring.

The module contains a microprocessor with internal memory that controls all module operations. Its internal electronic system includes a power supply, data transmission circuitry, address control, and an Initiating Device Circuit (IDC) monitoring circuit to ensure reliable communication and field device supervision.

The module is connected to the Signaling Line Circuit (SLC) of the Central Control Module (CCM) or Sub Control Unit (SCU). The system supports wiring configurations in accordance with NFPA Style 4, 6, and 7 standards on the SLC loop and utilizes IDC wiring with End-of-Line (EOL) resistor supervision in accordance with NFPA Style B. Device addressing can be easily configured using the DIP switch on the module.

The primary function of the module is to monitor voltage on the IDC line. If an open circuit condition is detected, the module transmits a trouble signal to the control panel. In the event of a short circuit, the module enters an active condition and maintains this status at the panel until the system is reset. The module can also be programmed to detect alarm, supervisory, or specific trouble conditions according to system protection requirements.

## Product Specification

Model Type	DDS - IM
Device Type	Addressable Interface Module
SLC Input Voltage Range	12 - 30 VDC
Control System	Integrated Microprocessor
Maximum Standby Current	30 mA
Maximum Alarm Current	30 mA
Panel Connection	Signaling Line Circuit (SLC)
Operating Temperature Range	0°C to 49°C
Operating Humidity	0 - 93% RH (Non-condensing)
SLC Wiring Mode	NFPA Style 4, 6, and 7
Maximum Circuit Resistance	50 kΩ
IDC Wiring Mode	NFPA Style B
End-of-Line Resistor	10 kΩ, ¼ W
IDC Device Compatibility	Dry Contact Devices / Conventional Detectors
Addressing Method	DIP Switch
Status Indicator	Operational LED Indicator
Monitoring Functions	Normal, Alarm, Supervisory, Trouble
Communication	Digital Addressable via SLC
Dimensions	Compliant with Standard Module Housing

## Key Features

- High-Precision Addressable Monitoring
- Flexible Field Device Integration
- NFPA Standards Compliance
- Automatic Circuit Supervision
- Integrated Intelligent Microprocessor
- Visual Status Indicator
- Quick and Easy Configuration
- Stable Digital Communication
- Reliable Design for Modern Fire Protection Systems

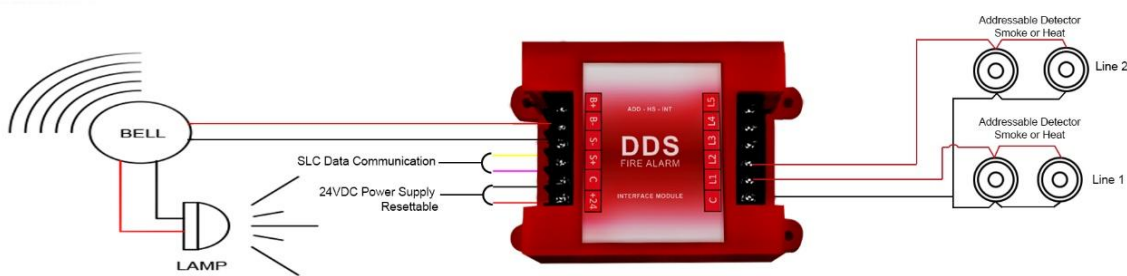
## Advantages Product

- Enhances Fire Protection System Reliability
- Simplifies Maintenance and Troubleshooting
- More Flexible and Efficient Installation
- Broad Integration with Field Devices
- More Accurate and Stable System Monitoring

# FIRE ALARM INTERFACE MODULE

**FIRE ALARM DEVICE**

## Schematic Drawing



### Note :

- This document is not intended to cover all details, equipment variations, or every possible condition that may occur during installation, operation, and maintenance.
- Product specifications are subject to change at any time without prior notice.
- Actual device performance depends on proper application, installation, and use by qualified professionals.
- For additional information or specific requirements not covered in this document, please contact the authorized distributor in your respective region.

# SMOKE DETECTOR

## PHOTOELECTRIC ADDRESSABLE

**FIRE ALARM DEVICE**

Model: DDS - WT30L

### Product Image



### Product Description

#### DDS-WT30L Smoke Detector Addressable

The DDS-WT30L addressable smoke detector utilizes advanced photoelectric sensing technology to detect smoke particles quickly and accurately at the early stage of a fire. When smoke enters the detection chamber, the particles scatter infrared light, which is then received by the sensor element and produces a change in electrical current. Once the current reaches the predetermined threshold, the device activates an alarm signal as an early warning.

With an addressable system, each detector has a unique address, allowing the exact location of the smoke source to be identified through the control panel. This enables more efficient monitoring, faster emergency response, and more accurate fire protection system management.

Designed with modern technology, this device provides high sensitivity, fast response, and optimal operational reliability. Its compact and aesthetic design makes it suitable for various modern buildings without disturbing interior appearance.

### Product Specifications

<b>Model Type</b>	DDS-WT30L
<b>Detection Type</b>	Photoelectric Smoke Detection
<b>Identification System</b>	Addressable (unique device address)
<b>Operating Voltage</b>	12-30 VDC
<b>Nominal Voltage</b>	24 VDC
<b>Standby Current</b>	≤ 60 μA
<b>Alarm Current</b>	≤ 100 mA
<b>Initial Stabilization Time</b>	≤ 15 seconds
<b>Detection Method</b>	Infrared light scattering by smoke particles
<b>Alarm Activation</b>	Automatic when detection threshold is reached
<b>Operating Temperature</b>	-10°C to +50°C
<b>Operating Humidity</b>	0-95% RH (non-condensing)
<b>Color</b>	Off-white
<b>Design</b>	Compact for modern interior installation

### Key Features

- High-precision photoelectric detection technology
- Addressable system for specific location identification
- Stable performance and fast response
- Fire-resistant material construction
- Energy-efficient operation
- Compact design for interior installation
- Wide environmental operating range
- Easy system integration

### Applications

- Office buildings
- Apartments & residential buildings
- Hotels
- Hospitals
- Commercial areas

### Product Advantages

- Early detection with fast response
- Addressable real-time monitoring
- High system reliability
- Flexible system integration
- Clear status indication

# HEAT DETECTOR

## RATE OF RISE ADDRESSABLE

**FIRE ALARM DEVICE**

Model: DDS - WS19L

### Product Image



### Product Description

#### DDS-WS19L Heat Detector Addressable

The DDS-WS19L addressable heat detector is designed to detect rapid increases in air temperature accurately as an early indication of fire. The device continuously monitors ambient temperature changes. When the temperature rises significantly within a short period, the internal sensor element responds to the change and activates an alarm signal as an early warning.

The detector is equipped with an internal pressure compensation system that maintains sensor stability against normal environmental temperature fluctuations, thereby reducing the potential for false alarms. The temperature-rise detection mechanism makes this device highly reliable for environments with dust, vapor, or areas unsuitable for smoke detectors.

With an addressable system, each detector has a unique address that allows the control panel to identify the exact location of the heat source. This supports more efficient system monitoring, faster emergency response, and more accurate fire protection management.

### Product Specifications

<b>Model Type</b>	DDS - WS19L
<b>Detection Type</b>	Rate-of-Rise Heat Detection
<b>Identification System</b>	Addressable
<b>Operating Voltage</b>	12-30 VDC
<b>Alarm Current</b>	Maks. 30 mA
<b>Connection Method</b>	Non-Polarized
<b>Communication</b>	Digital Addressable via SLC
<b>Operating Humidity</b>	0 - 95% RH (non-kondensasi)
<b>Operating Temperature Range</b>	-10°C hingga +55°C
<b>Activation Temperature</b>	In accordance with EN54 / CNS standards
<b>Dimensions</b>	Ø 102 mm × 42 mm
<b>Weight</b>	± 130 gram
<b>Certification</b>	EN54, CNS

### Key Features

- Rapid temperature-rise detection
- High-precision rate-of-rise technology
- Addressable with unique device identification
- Internal pressure compensation system
- Real time monitoring via control panel
- Visual status indicator
- Resistant to harsh environmental conditions
- Practical installation design
- Heat-resistant and durable construction

### Applications

- Office buildings
- Apartments & residential buildings
- Hotels
- Hospitals
- Commercial areas

### Product Advantages

- Reliable fire detection in challenging environments
- Fast response to significant temperature increase
- High detection accuracy with operational stability
- Precise location identification
- Reduced potential for false alarms
- Easy integration with addressable fire alarm systems

# MANUAL CALL POINT

**FIRE ALARM DEVICE**

Model: DDS - FP1

## Product Image



## Product Description

### DDS-FP1 Manual Call Point

The DDS-FP1 Manual Call Point (MCP) is a critical device in a fire alarm system used to manually transmit a fire warning signal. The device enables users to quickly activate the alarm upon noticing signs of fire by simply pressing the button located behind a transparent protective cover. Once activated, the MCP immediately sends a signal to the Fire Alarm Control Panel (FACP) or repeater panel to trigger the alarm system.

The MCP is equipped with a confirmation indicator lamp that illuminates to verify that the signal has been successfully transmitted and received by the panel. In addition, it features a communication function via a telephone jack that allows direct coordination with personnel at the control panel.

Constructed from fire-resistant materials and featuring a durable, reusable transparent protective cover, the Manual Call Point provides high reliability in emergency situations without requiring unit disassembly after activation.

## Product Specifications

Model Type	DDS - FP1
Operating Voltage	24 VDC
Alarm Current	30 Ma
Output Contact	24VDC 100mA
Additional Features	Phone Jack
Indicator	Confirmation LED
Reset	Pin Reset
Dimension	140 mm
Weight	150 gram
Color	Merah

## Key Features

- Emergency Manual Activation System
- Activation Confirmation LED Indicator
- Telephone Jack for Communication
- Reusable Transparent Protective Cover
- Fire Resistant Material Construction
- Reset Button After Activation

## Applications

- Office Buildings
- Apartments & Residential Buildings
- Hotels
- Hospitals
- Commercial Areas
- Shopping Centers
- Schools & Educational Institutions

## Product Advantages

- Rapid Activation by Simply Pressing the Button
- Automatic Button Reset Without Unit Disassembly
- Indicator Lamp for Signal Confirmation
- Durable and Reusable Transparent Protective Cover
- Fire-Resistant Material for Enhanced Safety
- Practical and User-Friendly Design
- External Wiring Terminal for Easy Installation

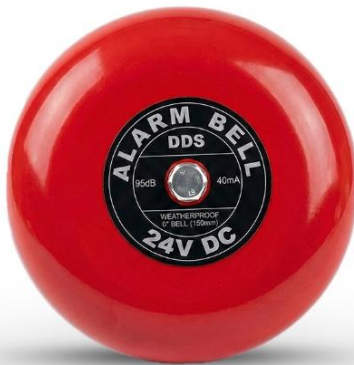
# FIRE ALARM BELL

**24 VDC**

**FIRE ALARM DEVICE**

Model: DDS - FB6

## Product Image



## Product Description

### DDS-FB6 Fire Alarm Bell 24 VDC

The DDS-FB6 Fire Alarm Bell is an audible warning device designed as part of a fire protection system. It functions to provide a loud audible signal when the fire alarm system detects a potential fire condition.

The device operates under direct control of the Fire Alarm Control Panel (FACP) or repeater panel, enabling rapid response during emergency situations. When an alarm condition is detected, the bell activates automatically to alert building occupants to initiate evacuation procedures or immediate response actions.

Utilizing an internal motor driven mechanism, the Fire Alarm Bell produces a stable and consistent sound output while maintaining efficient power consumption. Its mechanical structure is designed for strength and durability, ensuring long term operation without performance degradation.

This device is suitable for a wide range of building types as an early warning solution that enhances occupant safety and helps minimize potential losses caused by delayed fire incident notification.

## Product Specifications

Model Type	DDS - FB6
Operating Voltage	24 VDC
Alarm Current	35 mA
Drive System	Motor
Material	Alloy Aluminium 3.0
Diameter	6" (150mm)
Weight	418 gram
Audio Output	≥ 90 dB
Color	Red

## Key Features

- Motor-Driven Mechanism for Consistent Sound Output
- Energy-Efficient Design
- Durable Aluminum Alloy Construction
- High Sound Output (≥ 90 dB)
- Suitable for Long-Term Operation
- Easy Installation for Various Fire Alarm Systems

## Applications

- Office Buildings
- Apartments & Residential Buildings
- Hotels
- Hospitals
- Commercial Areas
- Shopping Centers
- Schools & Educational Institutions

## Product Advantages

- Low Power Consumption That Does Not Burden the Control Panel
- Loud Sound Output Ensuring Wide-Area Audibility
- Robust and Durable Construction
- Capable of Continuous Operation Up to 40 Hours Without Performance Degradation
- Motor Driven Mechanism for Stable Sound Performance
- Fast Response Upon Alarm Activation
- Easy Integration with Fire Alarm Systems

# INDICATING LAMP LED

**FIRE ALARM DEVICE**

Model: DDS - FL3

## Product Image



## Product Description

### DDS-FL3 Indicator Lamp LED

The DDS-FL3 LED Indicator Lamp is a visual indicator device designed to display the activation status of fire detection equipment from an easily visible location. The indicator lamp illuminates or flashes when the connected detector or fire alarm system device is in an alarm condition, allowing quick identification of the incident point without the need to directly observe the main device.

The device is controlled through the fire alarm control panel or repeater terminal and functions as a remote indicator for detectors installed in enclosed areas, high ceilings, technical rooms, or locations that are difficult to access visually.

Utilizing high-intensity LED technology, the indicator lamp provides clear visibility, fast response, and low power consumption. Its compact design and heat-resistant housing material ensure stable performance and operational reliability under various environmental conditions in modern buildings.

The LED Indicator Lamp supports addressable fire protection systems by providing direct, accurate, and easily recognizable alarm status information, thereby enhancing monitoring effectiveness and improving response speed during fire emergency conditions.

## Product Specifications

Model Type	DDS - FL3
Operating Voltage	24 VDC
Alarm Current	12 mA
Control Source	Fire Alarm Control Panel / Repeater
Operating Temperature Range	-10°C hingga +55°C
Environmental Resilience	Indoor Use
Dimension	92 x 58 mm
Weight	± 52 gram
Color	Red
Type of Indicator	LED

## Key Features

- Remote Visual Alarm Indication
- High-Intensity LED
- Fast and Stable Response
- Easy Integration with Fire Alarm Systems
- Compact and Heat-Resistant Design
- Simple and Practical Installation

## Applications

- High-Ceiling Areas
- Enclosed or Concealed Spaces
- Building Corridors
- Office Areas
- Commercial Building Fire Protection Systems
- Detector Installations Not Directly Visible

## Product Advantages

- Facilitates Alarm Location Identification in Concealed Areas
- Improves Fire Protection System Monitoring Efficiency
- High Visibility for Faster Emergency Response
- Low Power Consumption with Long Service Life
- Stable Operation Across Various Building Environmental Conditions
- Effective Solution for Modern Fire Alarm Systems

# REMOTE LAMP

**FIRE ALARM DEVICE**

Model: DDS - RL1

## Product Image



## Product Descriptions

### DDS-RL1 Remote Lamp

DDS-RL1 Remote Lamp is an auxiliary visual indicator in a fire alarm system designed to display alarm status at a location separate from the primary detection device.

The device ensures that alarm signals remain clearly visible even when the detector or main system is installed inside enclosed spaces, ceilings, or areas that are not easily observable.

When the detector is activated, the Remote Lamp illuminates as a visual indication that the system is in an alarm condition. With low power consumption, the device operates efficiently without imposing additional load on the fire alarm system.

The Remote Lamp significantly enhances alarm status visibility, particularly in areas such as corridors, control rooms, or exterior locations that require additional visual indication.

## Product Specifications

Model Type	DDS - RL1
Operating Voltage	24 VDC
Alarm Current	30 mA
Contact Rating	24VDC 100mA
Indicator	Confirmation LED
Cable System	2 Wire

## Key Features

- Red LED Alarm Indicator
- Two-Wire System
- Energy-Efficient Operation
- Synchronized with Primary Detector
- Suitable for Enclosed or Concealed Areas

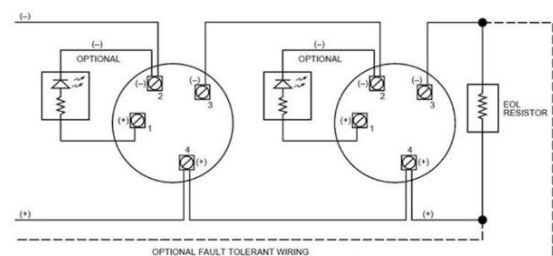
## Applications

- Office Buildings
- Apartments & Residential Buildings
- Hotels
- Hospitals
- Commercial Areas
- Shopping Centers
- Schools & Educational Institutions

## Product Advantages

- Provides Additional Visual Alarm Indication
- Ensures Alarm Visibility from a Distance
- Low Power Consumption
- Enhances Safety and Enables Faster Response
- Simple Design with Easy Installation
- Supports Two-Wire System

### Typical Wiring



# PHONE

## JACK

**FIRE ALARM DEVICE**

Model: DDS - PJ1

### Product Image



### Product Specifications

<b>Model Type</b>	DDS - PJ1
<b>Operating Voltage</b>	24 VDC
<b>Contact Rating</b>	24 VDC, 100 mA
<b>Wiring System</b>	3-Wire Connection
<b>Device Type</b>	Phone Jack Intercom
<b>Primary Function</b>	Emergency Communication Connection Point
<b>Communication System</b>	Two-way
<b>Operation Method</b>	Manual Connection Interface
<b>Installation Application</b>	Indoor

### Key Features

- Clear and Stable Two-Way Emergency Communication
- Dedicated Connection Point for Firefighter Handsets
- Rapid Communication Response During Emergencies
- Compact Design with Flexible Installation
- Robust Construction for Long-Term Operation
- Compatible with Building Fire Alarm Systems
- Stable Performance Across Various Environmental Conditions

### Applications

- Office Buildings
- Apartments & Residential Buildings
- Hotels
- Hospitals
- Commercial Areas
- Shopping Centers
- Schools & Educational Institutions

### Product Advantages

- Provides Additional Visual Indication
- Ensures Alarm Visibility from a Distance
- Low Power Consumption
- Enhances Safety and Enables Faster Response
- Simple Design with Easy Installation
- Supports Two-Wire System

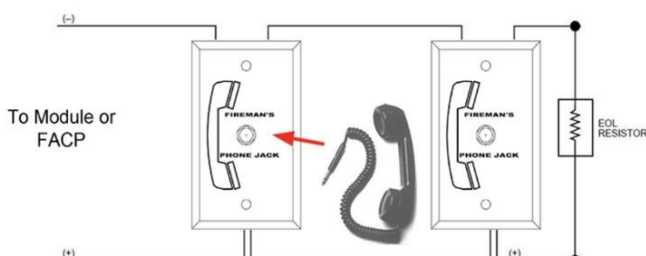
### Product Descriptions

#### DDS-PJ1 Phone Jack

DDS - PJ1 Phone Jack Intercom is a professional emergency communication interface designed to support operational coordination within building fire protection systems. The device provides a secure and responsive connection point for firefighter handsets or intercom units, enabling clear, stable, and real-time two-way communication during emergency situations.

Engineered to high reliability standards, the DDS-PJ1 utilizes industrial-grade components to ensure optimal performance for long-term operation. Its compact, robust, and aesthetic design allows flexible installation across various modern building environments without affecting interior appearance.

#### Typical Wiring



# MASTER PHONE JACK

## FIRE ALARM

**FIRE ALARM DEVICE**

Model: DDS - BPJ1

### Product Image



### Product Specifications

<b>Model Type</b>	DDS - PJ1
<b>Operating Voltage</b>	24 VDC
<b>Contact Rating</b>	24 VDC, 100 mA
<b>Wiring System</b>	3-Wire Connection
<b>Visual Indicator</b>	LED Status
<b>Audio Indicator</b>	Built-in Notification Buzzer
<b>Polarity</b>	Non-Polarized
<b>Device Type</b>	Phone Jack Protective Box
<b>Primary Function</b>	Protective housing and communication connection point
<b>Communication System</b>	Emergency Intercom
<b>Operation Method</b>	Manual Connection Interface
<b>System Integration</b>	Fire Alarm & Emergency Communication System

### Product Descriptions

#### DDS-BPJ11 Master Phone Jack Fire Alarm

DDS-BPJ1 Phone Jack Box is a professional protective housing unit designed to ensure emergency communication connectivity remains secure, stable, and easily accessible within building safety systems. The device provides an integrated connection point for firefighter handsets or intercom units, enabling fast and reliable connection during emergency situations.

The unit is equipped with a visual LED indicator and an audible buzzer notification that clearly informs personnel of connection status and system activation. Its robust protective enclosure provides optimal protection against dust, impact, and environmental influences, ensuring reliable performance for long-term operation.

With its compact design and practical installation, the DDS-BPJ1 serves as an ideal solution for enhancing emergency communication readiness across various types of modern buildings.

### Key Features

- Integrated Phone Jack for Emergency Communication
- LED Indicator for System Status
- Audible Buzzer Notification
- Quick Connection for Firefighter Handsets
- Impact-Resistant and Environmentally Durable Protective Housing
- Easy Installation with Rapid Access During Emergencies

### Applications

- Office Buildings
- Apartments & Residential Buildings
- Hotels
- Hospitals
- Commercial Areas
- Shopping Centers
- Schools & Educational Institutions

### Product Advantages

- Enhances Field Emergency Communication Reliability
- Provides Simultaneous Visual and Audible Notifications
- Optimal Device Protection for Long-Term Operation
- Accelerates Fire Response Team Coordination
- Professional Design for Building Safety System Integration